

DOLPHIN TOWERS RENOVATION

HELICAL PILES

PROJECT DESCRIPTION:

Project Date: June 2014

Project Name: Dolphin Towers Renovation

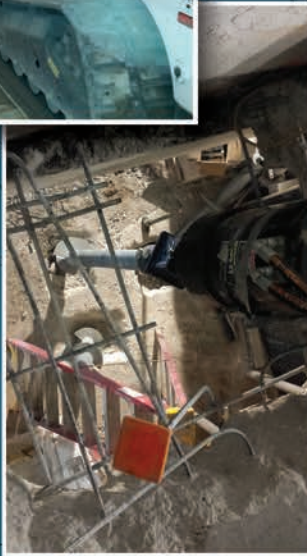
Engineer of Record: Magnum-Geo Solutions

Magnum Installer: Concrete Protection & Restoration

Project Type: Helical Piles

Project Location: Sarasota, Florida

Description: Existing condominium towers were to be updated to meet current building codes and additional foundation load was required. Magnum Geo Solutions designed 3 different 4.5" piles to achieve the required addition capacity from the renovation. Concrete Protection & Restoration successfully installed 170 MH425B helical piles (1 load test pile & 169 production piles) to an allowable capacity of 60 kips compression and 44 kips tension. Low overhead clearance presented installation & constructability issues, so 5 ft section lengths were utilized with a high flow skid steer to achieve project requirements.



SHORING & UNDERPINNING PLAN

SCALE 1/4" = 1'-0"

HELICAL ANCHOR SHORING SCHEDULE					
SYMBOL	QUANTITY	DESIGN CAPACITY	MIN. LENGTH	PIER CAP	NOTES
⊙	1	10 KIPS	10' (81)	FRAGILE TO SHOCK CAP W/ 1800# WASHERS	FRAGILE TO SHOCK CAP W/ 1800# WASHERS
⊙	1	10 KIPS	10' (81)	FRAGILE TO SHOCK CAP W/ 1800# WASHERS	FRAGILE TO SHOCK CAP W/ 1800# WASHERS

MAGNUM
HELICAL PILES



Toll Free: 800.822.7437

www.magnumpiering.com