

SPECIAL INSPECTION SCHEDULE		
ITEM	FREQUENCY	ANCHOR / PILE TYPE
HELICAL PILES/ANCHORS	PHYSICAL OBSERVATION OF START OF INSTALLATION AND REVIEW OF ALL INSTALLATION LOGS	MAGNUM GEO-SOLUTIONS, LLC.
CONCRETE	NONE REQUIRED	OPTIONAL
REINFORCING STEEL	NONE REQUIRED	OPTIONAL



MAGNUM GEO-SOLUTIONS, LLC
 363 W. DRAKE ROAD, SUITE 1
 FORT COLLINS, CO 80526
 970-275-2442
 800-822-7437
 WWW.MAGNUMPIERING.COM

THESE DRAWINGS AND ACCOMPANYING SPECIFICATIONS, AS INSTRUMENTS OF SERVICE ARE THE EXCLUSIVE PROPERTY OF THE ENGINEER AND THEIR USE AND PUBLICATION SHALL BE RESTRICTED TO THE ORIGINAL SITE FOR WHICH THEY WERE PREPARED. REUSE, REPRODUCTION OR PUBLICATION BY ANY METHOD IN WHOLE OR IN PART IS PROHIBITED EXCEPT BY WRITTEN PERMISSION FROM THE ENGINEER. TITLE TO THESE PLANS AND SPECIFICATIONS SHALL REMAIN WITH THE ENGINEER WITHOUT PREJUDICE, AND VISUAL CONTACT WITH THEM SHALL CONSTITUTE PRIMA FACIE EVIDENCE OF ACCEPTANCE OF THESE RESTRICTIONS.

COPYRIGHT MAGNUM GEO-SOLUTIONS, LLC
 ALL RIGHTS RESERVED.

PLAN NOT VALID WITHOUT ORIGINAL WET STAMP

PROJECT NAME:

RESIDENCE

ADDRESS

CITY, STATE

CLIENT:
 YOUR COMPANY
 NAME

Street Address

City, State

Contact: Your Name
 your number

HELICAL PILE AND ANCHOR LOCATION

NO.	DATE	REVISION/ISSUE

DESIGNED BY: MMB
 DRAWN BY: MMB
 CHECKED BY: HAP
 PROJECT No: RRHS1

DATE: 6/26/09
 SCALE: AS SHOWN

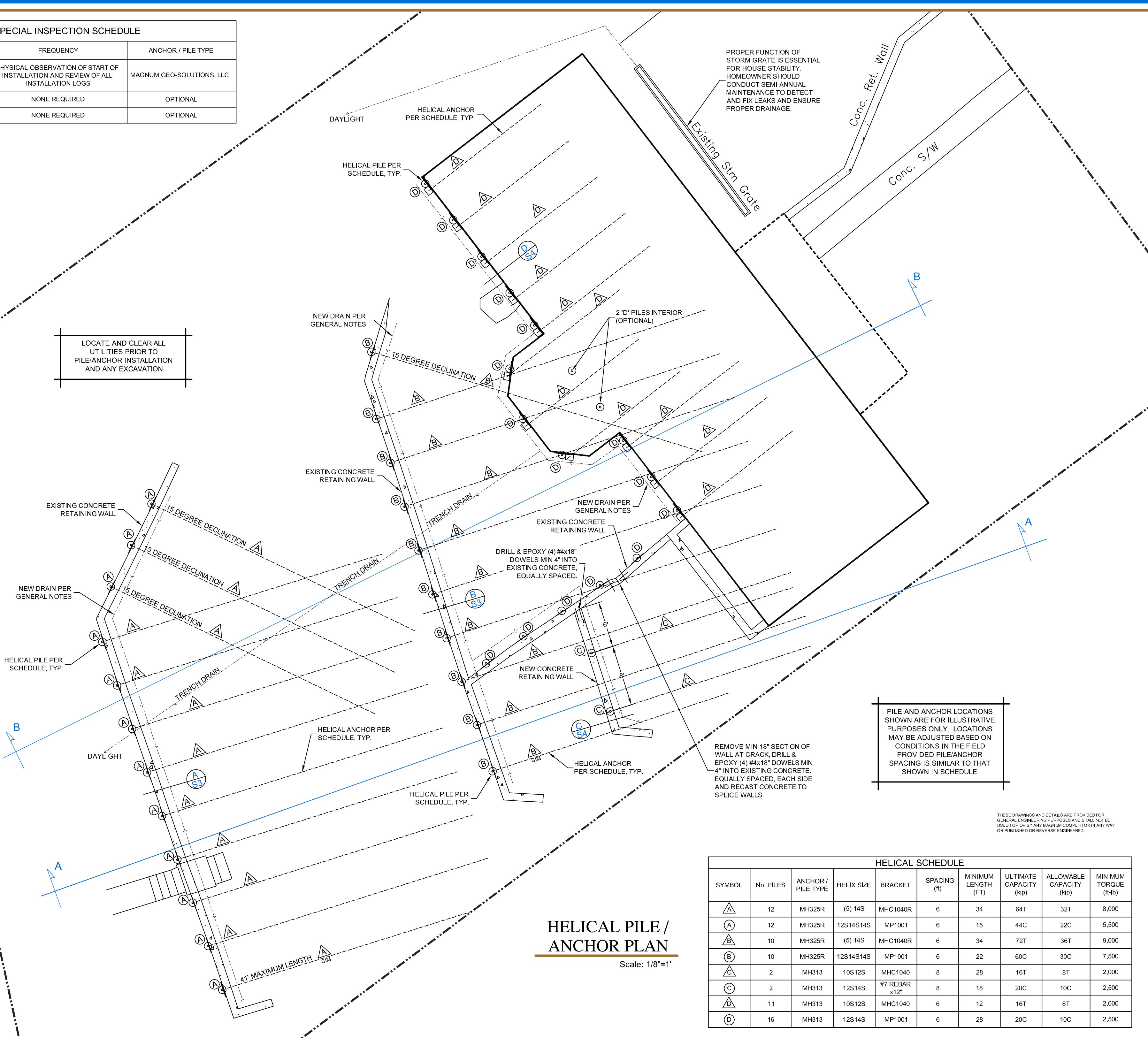
SHEET: S1

LOCATE AND CLEAR ALL UTILITIES PRIOR TO PILE/ANCHOR INSTALLATION AND ANY EXCAVATION

PROPER FUNCTION OF STORM GRATE IS ESSENTIAL FOR HOUSE STABILITY. HOMEOWNER SHOULD CONDUCT SEMI-ANNUAL MAINTENANCE TO DETECT AND FIX LEAKS AND ENSURE PROPER DRAINAGE.

PILE AND ANCHOR LOCATIONS SHOWN ARE FOR ILLUSTRATIVE PURPOSES ONLY. LOCATIONS MAY BE ADJUSTED BASED ON CONDITIONS IN THE FIELD PROVIDED PILE/ANCHOR SPACING IS SIMILAR TO THAT SHOWN IN SCHEDULE.

THESE DRAWINGS AND DETAILS ARE PROVIDED FOR GENERAL ENGINEERING PURPOSES AND SHALL NOT BE USED FOR OR BY ANY MAGNUM COMPETITOR IN ANY WAY OR PUBLISHED OR REVERSE ENGINEERED.



HELICAL PILE / ANCHOR PLAN
 Scale: 1/8"=1'

HELICAL SCHEDULE									
SYMBOL	No. PILES	ANCHOR / PILE TYPE	HELIX SIZE	BRACKET	SPACING (ft)	MINIMUM LENGTH (FT)	ULTIMATE CAPACITY (kip)	ALLOWABLE CAPACITY (kip)	MINIMUM TORQUE (ft-lb)
△	12	MH325R	(5) 14S	MHC1040R	6	34	64T	32T	8,000
○	12	MH325R	12S14S14S	MP1001	6	15	44C	22C	5,500
△	10	MH325R	(5) 14S	MHC1040R	6	34	72T	36T	9,000
○	10	MH325R	12S14S14S	MP1001	6	22	60C	30C	7,500
△	2	MH313	10S12S	MHC1040	8	28	16T	8T	2,000
○	2	MH313	12S14S	#7 REBAR x12"	8	18	20C	10C	2,500
△	11	MH313	10S12S	MHC1040	6	12	16T	8T	2,000
○	16	MH313	12S14S	MP1001	6	28	20C	10C	2,500

