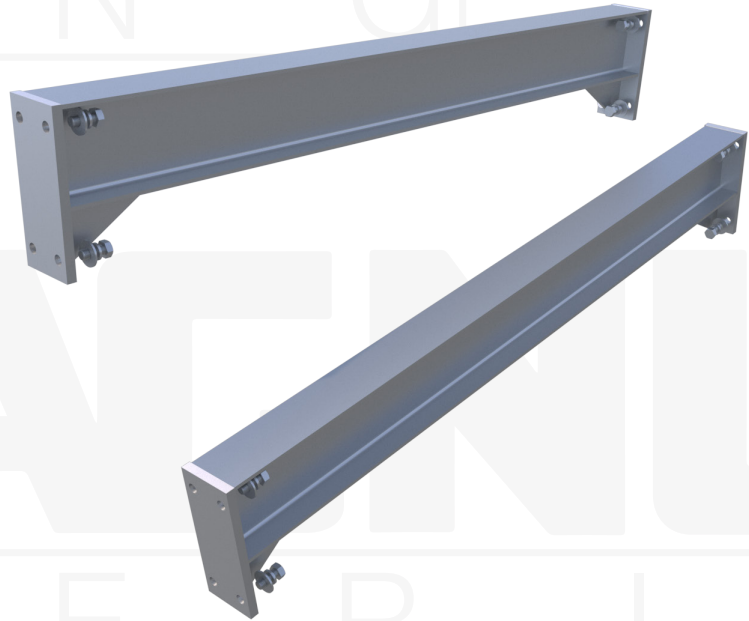


# MAGNUM® MMB818B Beam

W8x18 Beam and (2) 7/8" End Plates with (4) Holes Each for 7/8" - 9 UNC Bolts

**Description:** The MAGNUM® MMA818B Moment Frame Beam consists of a W8x18 wide flange beam with (2) 7/8" end plate with gussets, one on each end. The gusseted end plates have (4) 15/16" bolt holes for connection to a MAGNUM® Moment Frame Column. Allowable lengths vary and are the responsibility of the registered design professional.

| Specifications  |   |
|-----------------|---|
| Shape           | W8x18 Wide Flange Beam<br>ASTM A992 50 ksi, or Equivalent         |
| I               | New = 61.9 in <sup>4</sup>  |
| Ag              | New = 5.26 in <sup>2</sup>  |
| S               | New = 15.2 in <sup>3</sup>  |
| Length          | Custom  |
| Bolts           | (8) 7/8"-9 UNC SAE J429 Grade 5<br>Zinc Coated to ASTM B695/F1941 |
| Connection      | Torque Bolts to 365 ft-lbs  |
| Surface Coating | Galvanized per ASTM A153/A123 (G)                                 |



Column, Base Plate, and Concrete  
Anchor Bolts Sold Separately

**Installation Notes:** MAGNUM® MMB818B Moment Frame Beams are installed onto pre-installed Moment Frame Columns. Beams are hoisted into position, attach each beam with (4) 7/8" - 9 UNC bolts and lock washers, torque to 365 ft-lbs. Continue until all beams are installed. Architectural finishing varies by project. Ramset or PAF is acceptable for use on securing finishes to frame.

**MAGNUM®**  
P I E R I N G  
designed to support

156 Circle Freeway Dr.  
Cincinnati, OH. 45246  
800-822-7437  
[www.MagnumPiering.com](http://www.MagnumPiering.com)